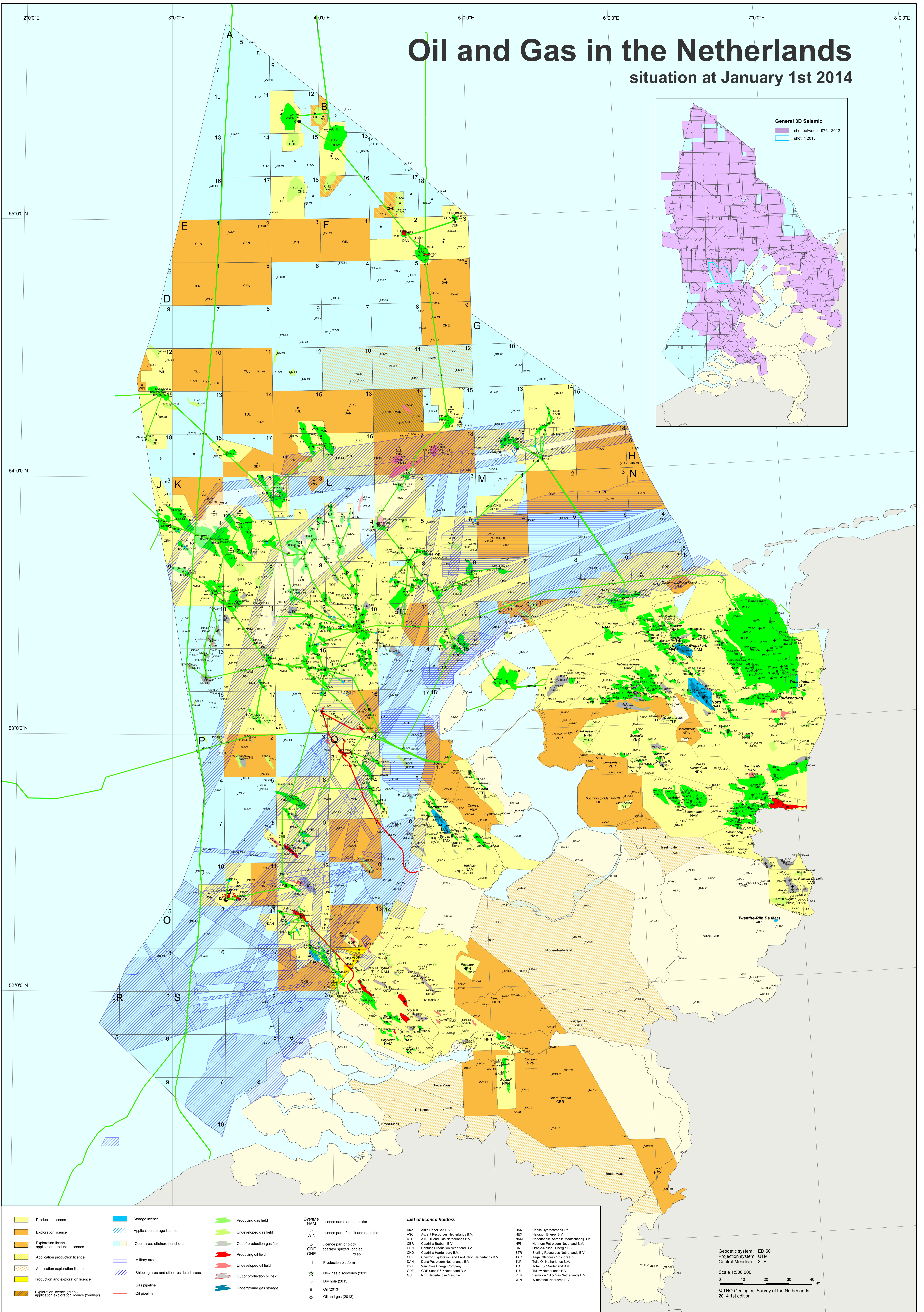


Oil and Gas in the Netherlands

situation at January 1st 2014



- | | | | |
|--|--|-----------------------------|----------------------------|
| Production licence | Storage licence | Producing gas field | Drenthe |
| Exploration licence | Application storage licence | Undeveloped gas field | NAM |
| Exploration licence, application production licence | Open area: offshore / onshore | Out of production gas field | WIN |
| Application production licence | Military area | Producing oil field | ONE |
| Application exploration licence | Shipping area and other restricted areas | Undeveloped oil field | New gas discoveries (2013) |
| Production and exploration licence | Gas pipeline | Out of production oil field | Oil (2013) |
| Exploration licence (deep), application exploration licence (ondeep) | Oil pipeline | Underground gas storage | Oil and gas (2013) |

- License name and operator**
- | | | | |
|------|---|-----|--|
| AKZ | Akzo Nobel Salt B.V. | HAN | Hansa Hydrocarbons Ltd. |
| ASG | Arcelor Resources Netherlands B.V. | HEX | Heaagon Energy B.V. |
| ATP | ATP Oil and Gas Netherlands B.V. | NAM | Nederlandse Aardolie Maatschappij B.V. |
| CEN | Centra Production Nederland B.V. | NPN | Northern Petroleum Nederland B.V. |
| CHE | Chemura Exploration and Production Netherlands B.V. | ONE | Onyx-Nassau Energie B.V. |
| DAN | Dana Petroleum Netherlands B.V. | STR | Sterling Resources Netherlands B.V. |
| DKK | Van Dijke Energy Company | TAG | Targa Offshore Operations B.V. |
| GOFF | GOFF Soes E&P Nederland B.V. | TLP | Tulip Oil Netherlands B.V. |
| GU | N.V. Nederlandse Gasunie | TOT | Total E&P Nederland B.V. |
| | | TUL | Tulio Netherlands B.V. |
| | | VER | Vermilion Oil & Gas Netherlands B.V. |
| | | WIN | Westernland Resources B.V. |

- List of licence holders**
- | | | | |
|------|---|-----|--|
| AKZ | Akzo Nobel Salt B.V. | HAN | Hansa Hydrocarbons Ltd. |
| ASG | Arcelor Resources Netherlands B.V. | HEX | Heaagon Energy B.V. |
| ATP | ATP Oil and Gas Netherlands B.V. | NAM | Nederlandse Aardolie Maatschappij B.V. |
| CEN | Centra Production Nederland B.V. | NPN | Northern Petroleum Nederland B.V. |
| CHE | Chemura Exploration and Production Netherlands B.V. | ONE | Onyx-Nassau Energie B.V. |
| DAN | Dana Petroleum Netherlands B.V. | STR | Sterling Resources Netherlands B.V. |
| DKK | Van Dijke Energy Company | TAG | Targa Offshore Operations B.V. |
| GOFF | GOFF Soes E&P Nederland B.V. | TLP | Tulip Oil Netherlands B.V. |
| GU | N.V. Nederlandse Gasunie | TOT | Total E&P Nederland B.V. |
| | | TUL | Tulio Netherlands B.V. |
| | | VER | Vermilion Oil & Gas Netherlands B.V. |
| | | WIN | Westernland Resources B.V. |

Geodetic system: ED 50
 Projection system: UTM
 Central Meridian: 3° E
 Scale 1:500 000

 © TNO Geological Survey of the Netherlands
 2014 1st edition