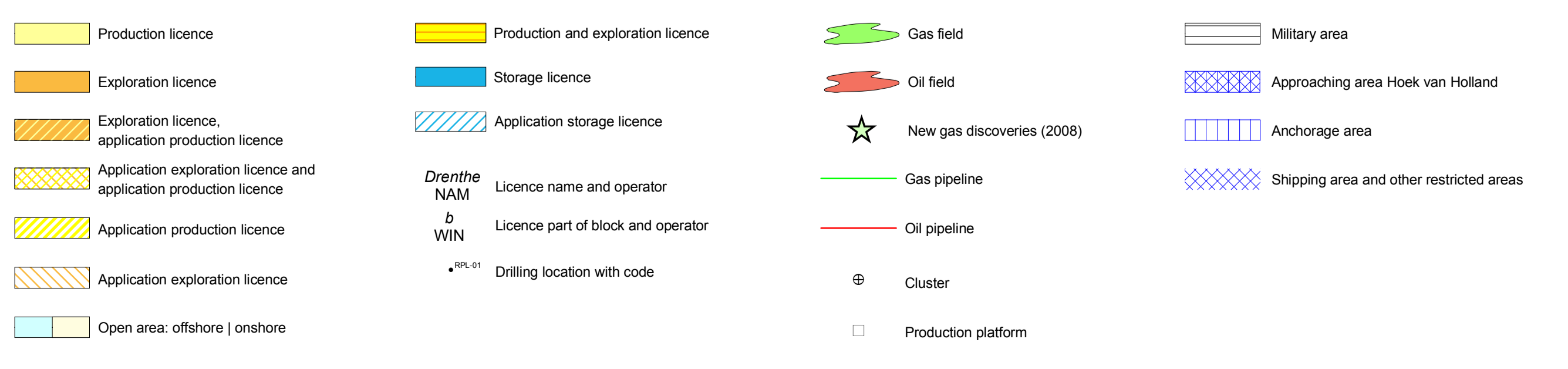
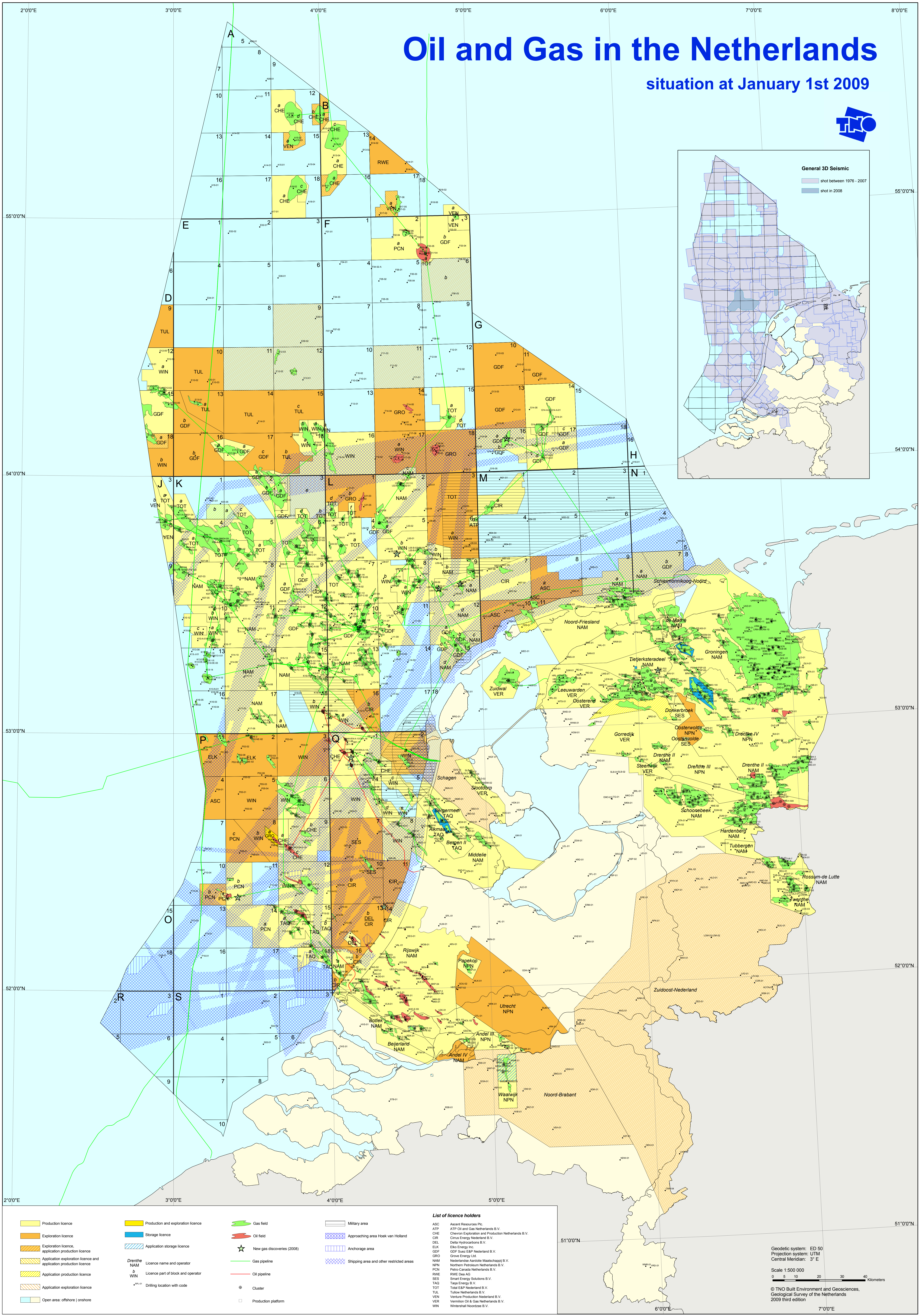
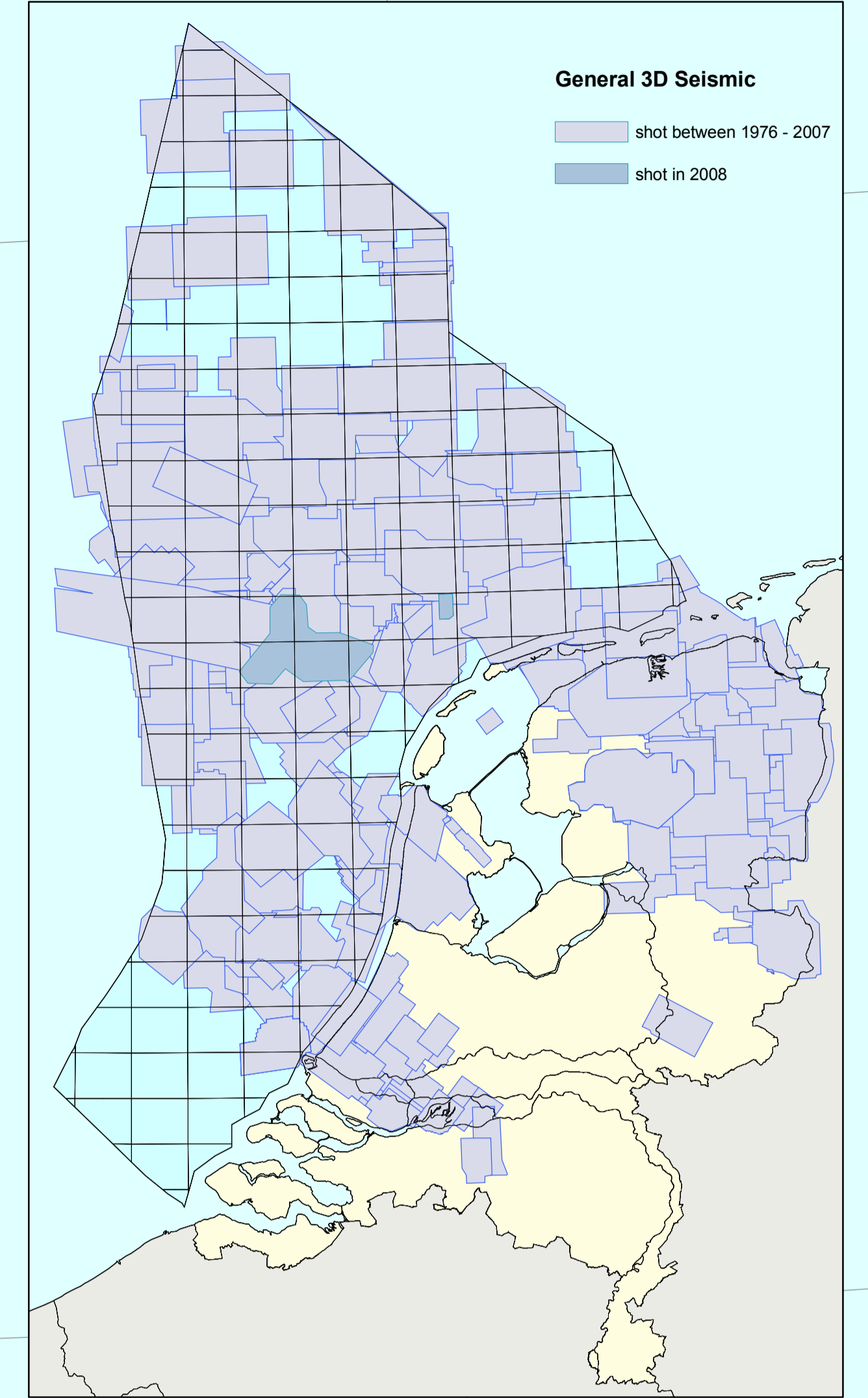
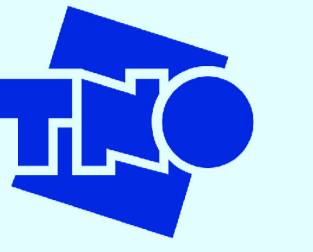


Oil and Gas in the Netherlands

situation at January 1st 2009



List of licence holders

ASC	Ascent Resources Pte.
ATP	ATP Oil and Gas Netherlands B.V.
CHE	Chevron Exploration and Production Netherlands B.V.
CIR	Cinva Energy Nederland B.V.
DEL	Delta Hydrocarbons B.V.
ELK	Elko Energy Inc.
GDF	GDF Suez EAP Nederland B.V.
GRO	Group Energy Ltd.
NAM	Nederlandse Aardolie Maatschappij B.V.
NPN	Northern Petroleum Netherlands B.V.
PCN	Petro-Canada Netherlands B.V.
RWE	RWE Dea AG
SES	Smart Energy Solutions B.V.
TAQ	Taga Energy B.V.
TOT	Total E&P Nederland B.V.
TUL	Tullow Netherlands B.V.
VEN	Venture Production Nederland B.V.
VER	Vermilion Oil & Gas Netherlands B.V.
WIN	Winterhalp Noordzee B.V.

Geodetic system: ED 50
 Projection system: UTM
 Central Meridian: 3° E
 Scale 1:500 000
 0 5 10 20 30 40 Kilometers
 © TNO Built Environment and Geosciences, Geological Survey of the Netherlands 2008 third edition