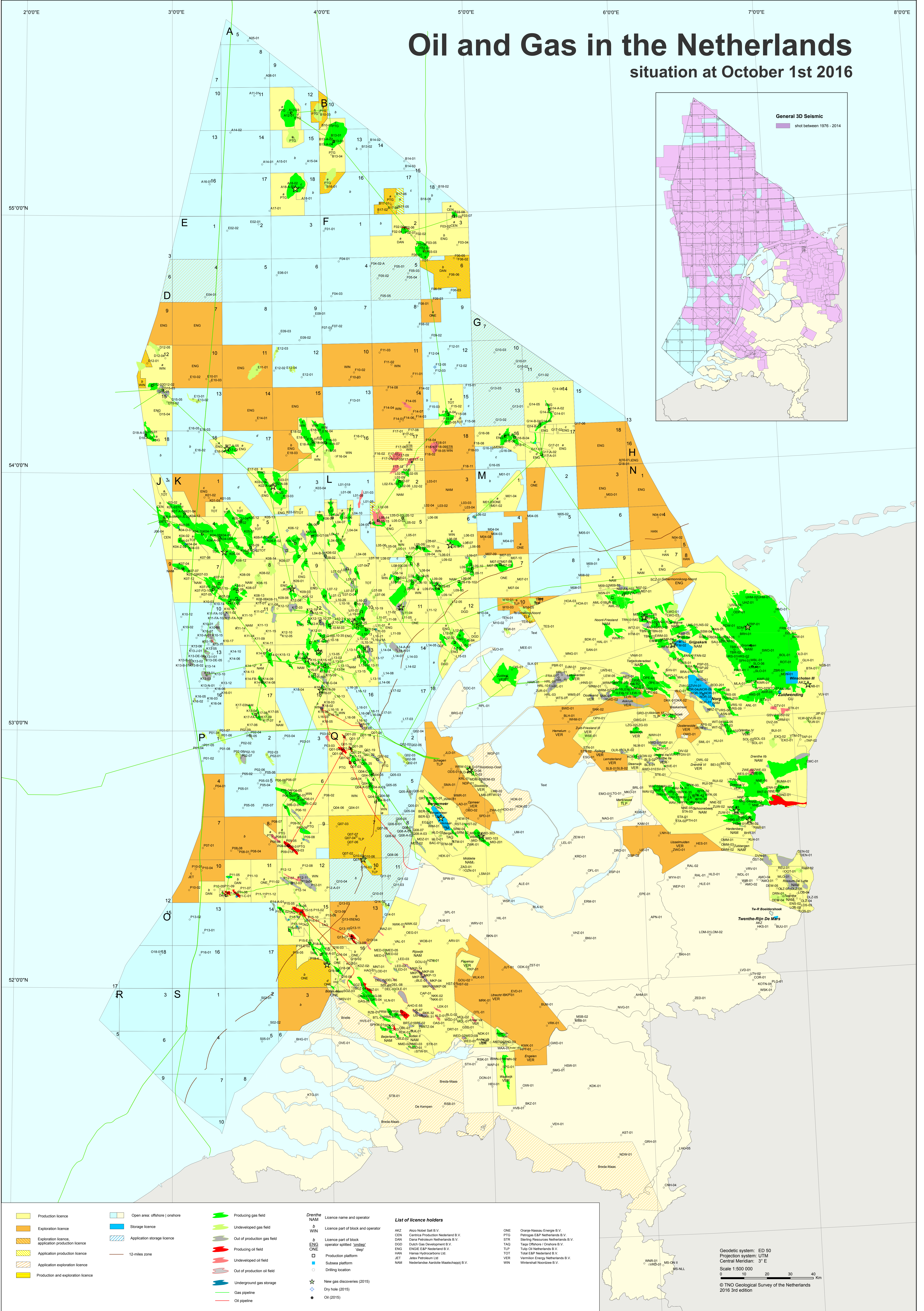


# Oil and Gas in the Netherlands

## situation at October 1st 2016



- Production licence
- Exploration licence
- Exploration licence, application production licence
- Application production licence
- Application exploration licence
- Production and exploration licence
- Open area, offshore | onshore
- Storage licence
- Application storage licence
- 12-miles zone

- Producing gas field
- Undeveloped gas field
- Out of production gas field
- Producing oil field
- Undeveloped oil field
- Out of production oil field
- Underground gas storage
- Gas pipeline
- Oil pipeline

- Drenthe**  
NAM  
WIN  
ENG  
ONE  
DIEP  
Subsea platform  
Drilling location  
New gas discoveries (2015)  
Dry hole (2015)  
Oil (2015)
- Licence name and operator**  
Licence part of block and operator  
Licence part of block, operator split

- List of licence holders**
- |     |  |     |                                    |     |                                    |
|-----|--|-----|------------------------------------|-----|------------------------------------|
| ACZ | Alzo Nobel Salt B.V.                   | CEN | Centrica Production Nederland B.V. | ONE | Orion Energy Services B.V.         |
| DAN | Dana Petroleum Netherlands B.V.        | DOD | Dutch Gas Development B.V.         | STR | Staring Resources Netherlands B.V. |
| ENG | ENGIE E&P Nederland B.V.               | HAN | Hansa Hydrocarbons Ltd.            | TAG | Tag Oil/Gas/Concrete B.V.          |
| NAM | Nederlandse Aardolie Maatschappij B.V. | VER | Ventura Energy Netherlands B.V.    | TLP | Tulip Oil Netherlands B.V.         |
|     |  | WV  | Wintershall Noordzee B.V.          | TOT | Total E&P Nederland B.V.           |

- |     |                                    |
|-----|------------------------------------|
| CRG | Crans-Geest Energie B.V.           |
| FRG | Frans Gas B.V.                     |
| STG | Staring Resources Netherlands B.V. |
| TAG | Tag Oil/Gas/Concrete B.V.          |
| TLP | Tulip Oil Netherlands B.V.         |
| TOT | Total E&P Nederland B.V.           |
| VER | Ventura Energy Netherlands B.V.    |
| WV  | Wintershall Noordzee B.V.          |

Geodetic system: ED 50  
Projection system: UTM  
Central Meridian: 3° E  
Scale 1:500 000  
© TNO Geological Survey of the Netherlands  
2016 3rd edition